

HALL PINÈDE

SURFACE/ SURFACE AREA

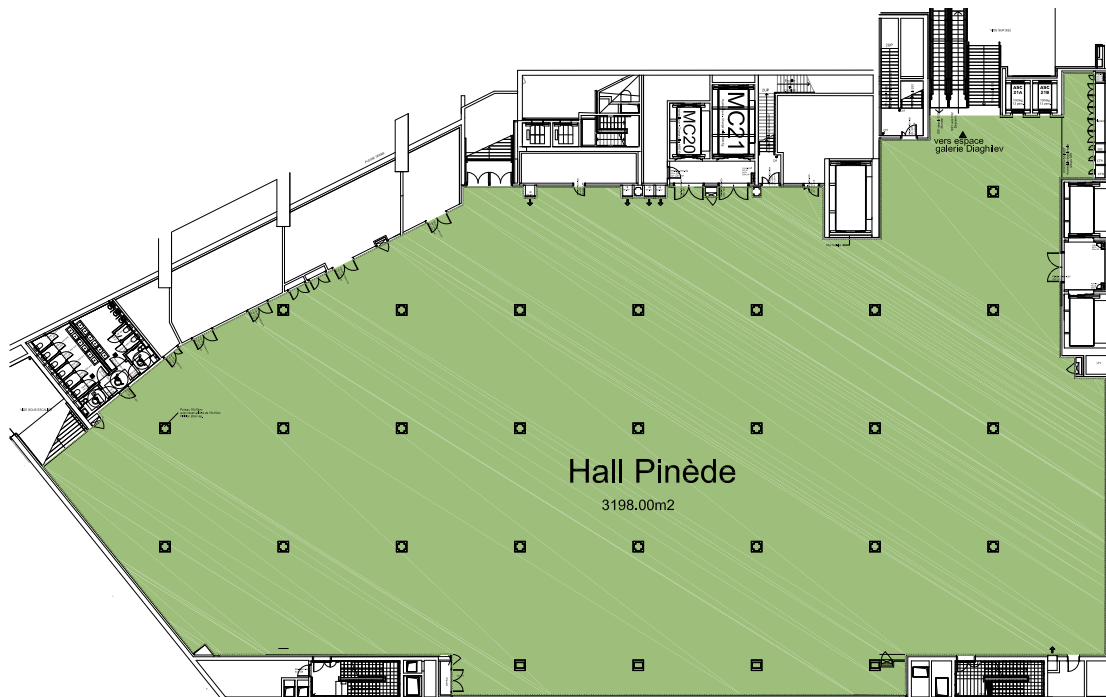
- Surface totale : **3 198 m²**
- Hauteur sous plafond : **2.50 m - 5.00 m**
- Total area: 3,198 m²
- Ceiling height: 250 m - 500 m

CAPACITÉ/ CAPACITY

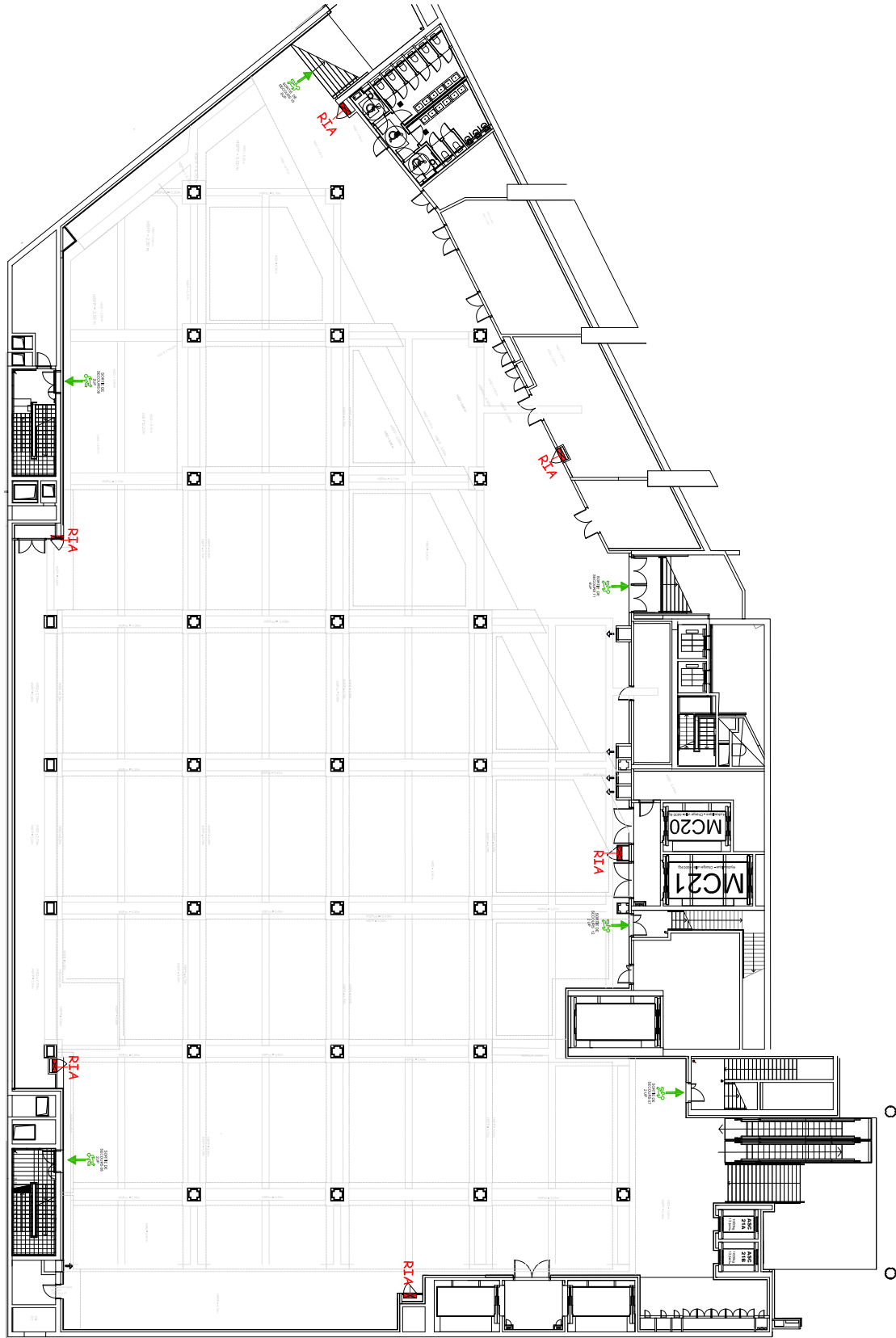
- Exposition : **137 stands de 9m²**
- Théâtre : **1503 places**
- Ecole : **891 places**
- Cabaret : **665 places (sur devis)**
- Salles de commissions : jusqu'à 10 modules de 100m²
- Restauration : **1860 personnes (en tables rondes)**
- Cocktail : entre 1800 à 2000 personnes
- Exhibition: 137 booths of 9 m² each
- Theatre: 1503 seats
- Classroom: 891 seats
- Cabaret: 665 seats (on request)
- Breakout rooms: up to 10 rooms of 100m²
- Catering: 1,860 seated guests (round tables)
- Cocktail: from 1800 to 2000 pax

LIVRAISON/ DELIVERY

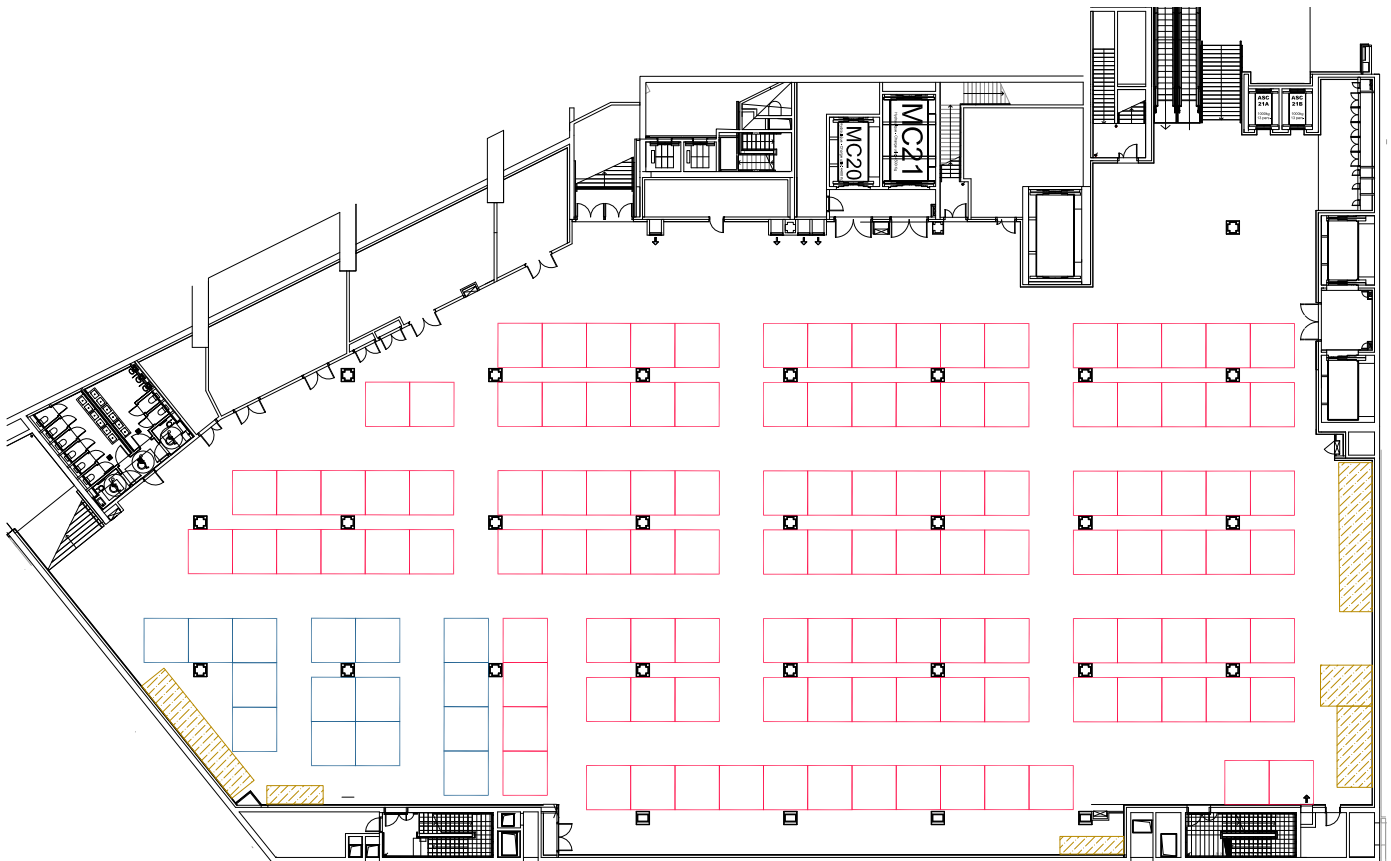
- Accès depuis la zone logistique E3 via MC 20 et MC 21
- Charge maximale au sol : 500 Kg/m²
- Access from the logistic zone E3 via MC 20 et MC 21
- Maximum floor loading: 500 Kg/m²



PLAN SÉCURITÉ ET HAUTEURS SOUS PLAFOND / SECURITY AND HEIGHT PLAN



AMÉNAGEMENT EXPOSITION / EXHIBITION USE



- 137 modules de 9 m²
- 137 modules of 9 m²

PRESTATIONS INCLUSES / INCLUDED SERVICES

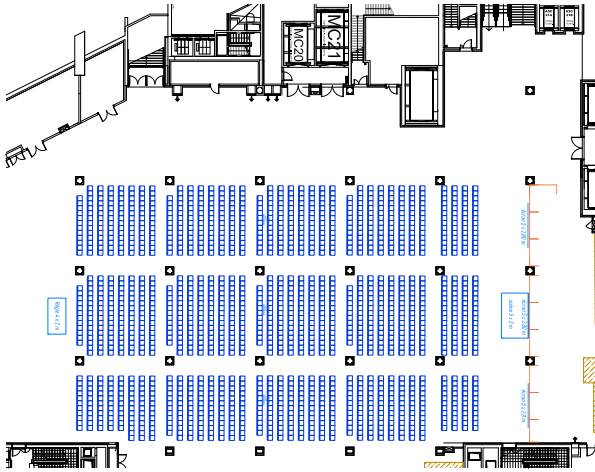
Nettoyage journalier des allées et parties communes (hors stand) /
Aisles daily cleaning and common areas (excluding stand)



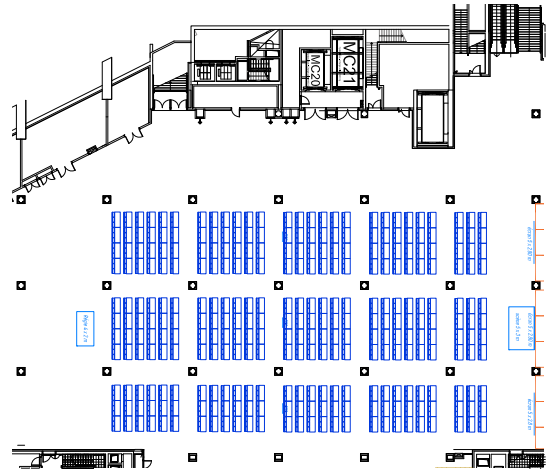
Éclairage de base de la salle, chauffage ou climatisation /
Basic room lighting, heating or cooling



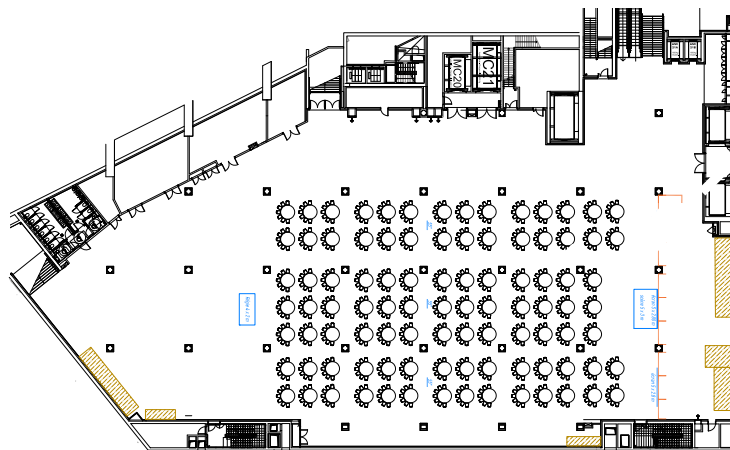
AMÉNAGEMENT RÉUNIONS ET CONFÉRENCES / MEETING AND CONFERENCE USE



- Style théâtre : 1503 pax
- Theatre style: 1503 pax



- Style école : 891 pax
- School style: 891 pax



- Style cabaret : 95 tables de 7 pax (665 pax)
- Cabaret style: 95 tables of 7 pax (665pax)

PRESTATIONS INCLUSES / INCLUDED SERVICES

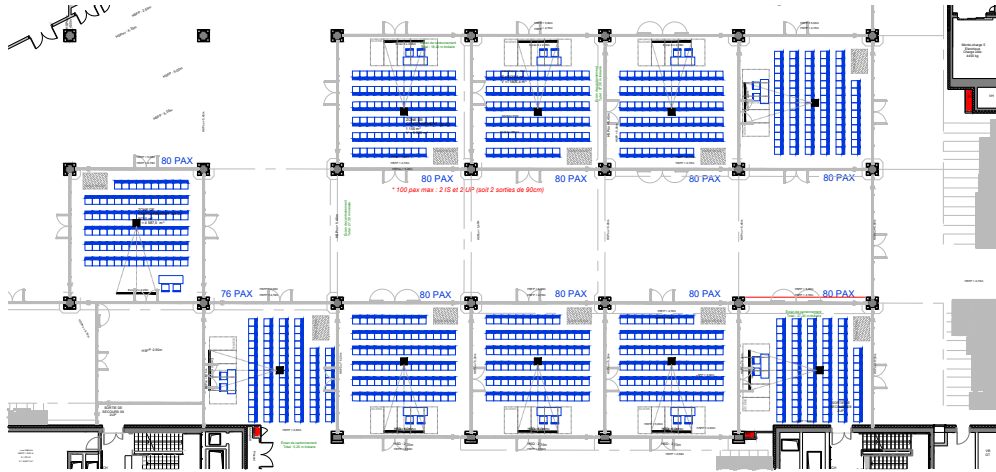
Nettoyage journalier / *Daily cleaning*



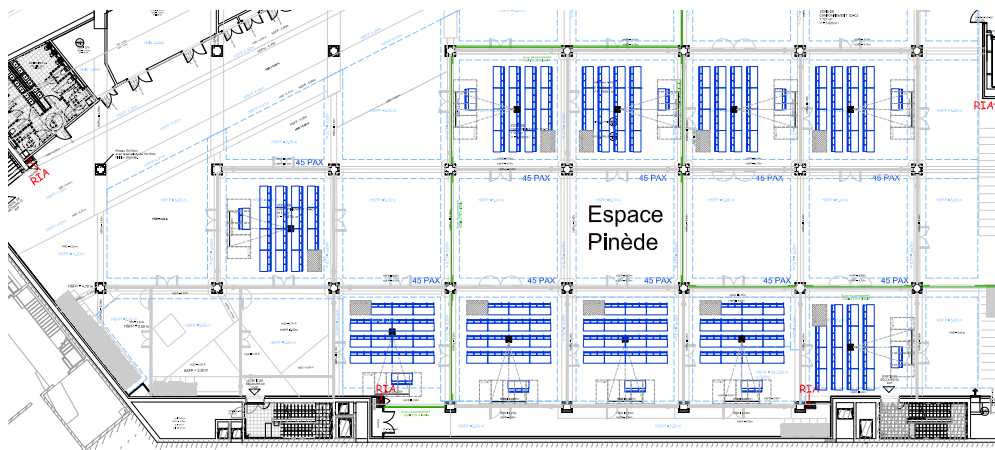
Éclairage de base de la salle, chauffage ou climatisation /
Basic room lighting, heating or cooling



AMÉNAGEMENT RÉUNIONS ET CONFÉRENCES / MEETING AND CONFERENCE USE



- Style théâtre : 796 pax
- Theatre style: 796 pax



- Style école : 450 pax
- School style: 450 pax

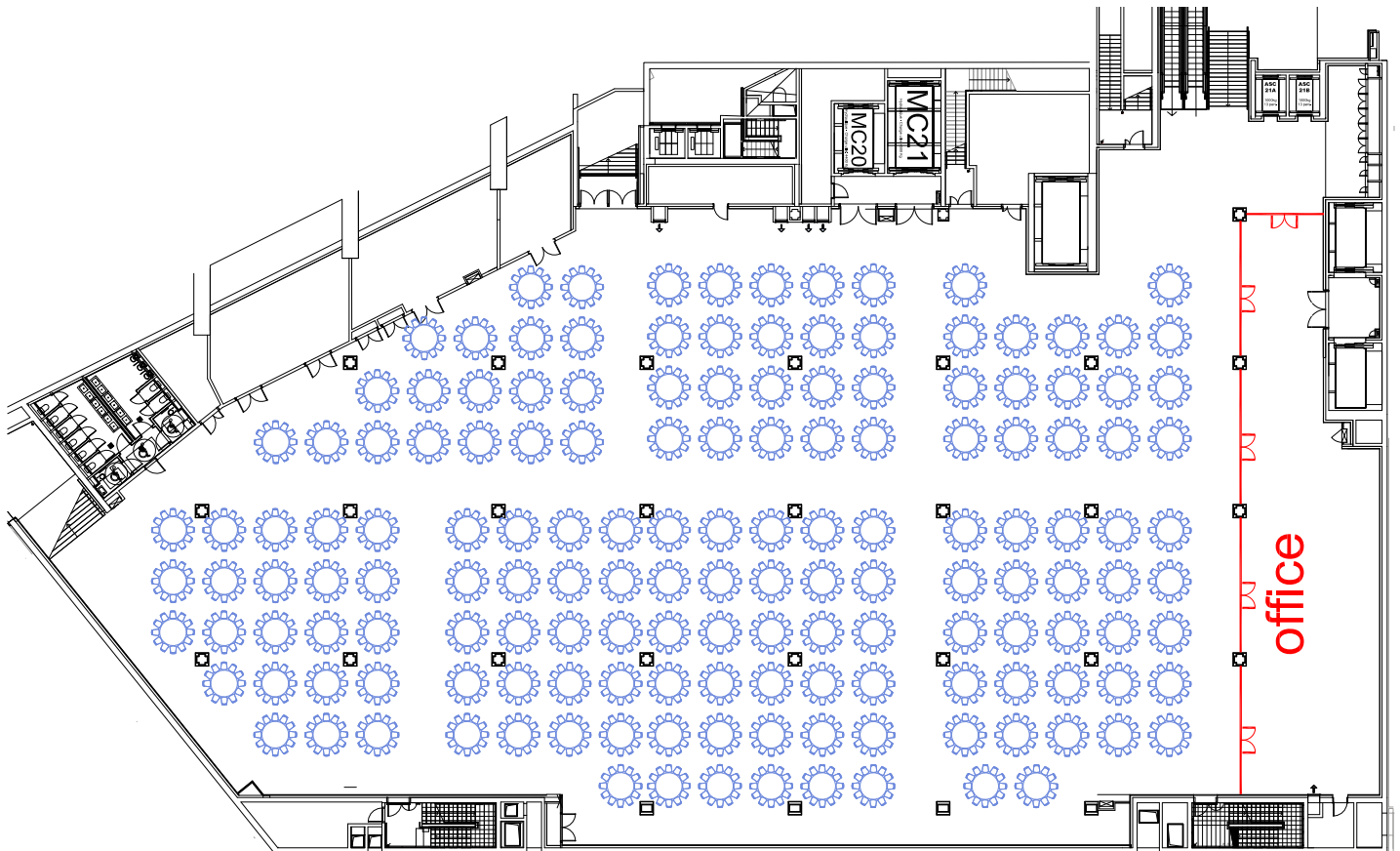
PRESTATIONS INCLUSES / INCLUDED SERVICES

50 pax - 200 pax

Écran / Screen	✓
Éclairage salle / room lighting	✓
Chaises (théâtre) / Chairs (theatre)	✓
Tables, chaises en tribunes / Tables, chairs for speakers in tribune	✓
Eau en tribune / Water for speakers	✓
Pupitre / Speaker stand	✓
Sonorisation de base (3 micros fil sans technicien) / Basic sound system (3 wired mics without technician)	✓
Podium / Podium	✓
1 Technicien son / 1 Sound technician	✓
Paperboard / Paperboard	-

AMÉNAGEMENT RESTAURATION / CATERING USE

- Configuration Déjeuner & Dîner assis / *Seated lunch & Dinner* : **155 tables x 12 pax = 1860**



PRESTATIONS INCLUSES / INCLUDED SERVICES

Nettoyage journalier / *Daily cleaning*



Éclairage de base de la salle, chauffage ou climatisation /
Basic room lighting, heating or cooling

